

HANDGUN SAFES

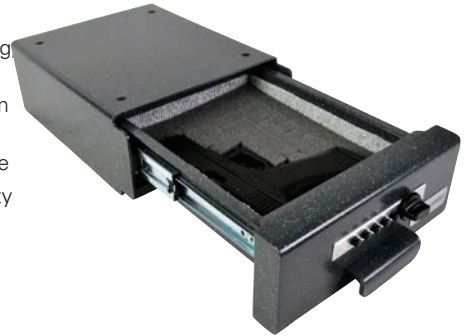
HAS410

HIDE-A-SAFE

SAFE FEATURES

- Door constructed of 3/16" solid steel plate with a strong pry-resistant locking bolt
- Body constructed of 10-gauge solid steel plate with mounting holes for top or bottom installation
- Reliable fast access Simplex push button mechanical lock

- Locking mechanism protected by steel housing impervious to punch attacks
- Heavy duty 75-lb rated slides (55-lb rated when fully extended)
- Textured Granite Finish with Chrome Hardware
- Fabric-lined drawer with protective high density pluck foam-lined interior
- Packaged for UPS/FedEx shipments



Exterior Dimension

4 x 10 x 12

Weight

20 lbs.



Exterior Dimension

4½ x 12 x 14

Weight

24 lbs.

IRC412

DRAWER SAFE

SAFE FEATURES

- Heavy-duty steel construction offers excellent burglary protection
- Motorized locking system
- LED display
- 3- to 6-digit combination, standard hotel room configuration
- Fits in a drawer and only requires 5" clearance
- Spacious interior can fit tablets and compact laptop computers

ESF1214

FINGERPRINT SAFE

SAFE FEATURES

- 1/8" thick solid steel body
- State-of-the-art fingerprint electronic lock with 100-fingerprint storage capacity
- Motorized bolt work
- Spring-assisted door auto opens when unlocked
- 7/16" steel door
- 1 adjustable shelf
- Warranty: 1 year parts and labor



Model

ESF1214

Exterior (HxWxD)

11¼ x 14½ x 12¹⁵/₁₆

Cu. In. Capacity

1,692

Weight

54 lbs.